

Electronics Recycling

Kailua-Kona

Mr. K's Recycle and
Redemption Center Inc.

73-5631 Kauhola St.

Sun., Mon., Tues., Thurs. & Sat.
10:00 a.m. - 3:00 p.m.



Hilo

Mr. K's Recycle and
Redemption Center Inc.

815 Kino'ole St.

Daily 10:00 am - 3:00 pm

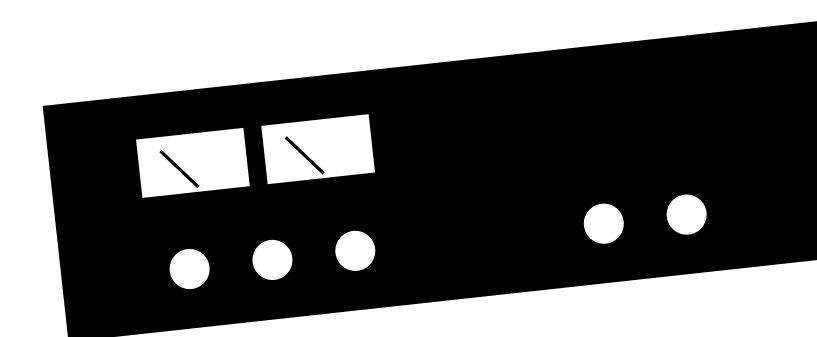
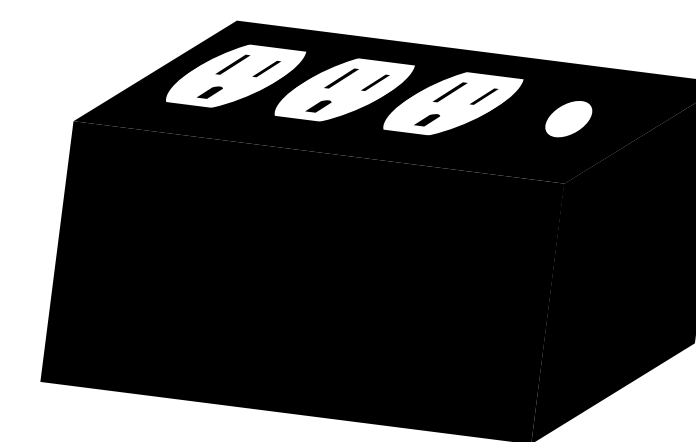
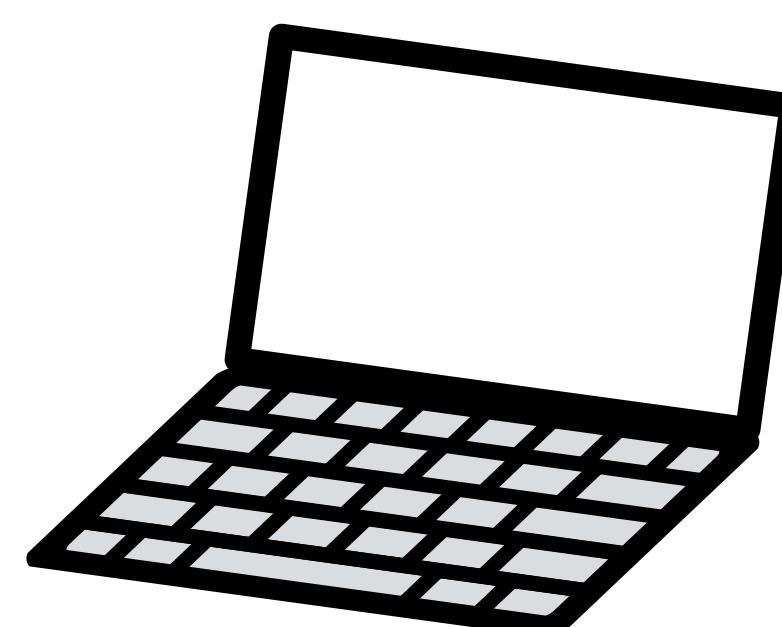
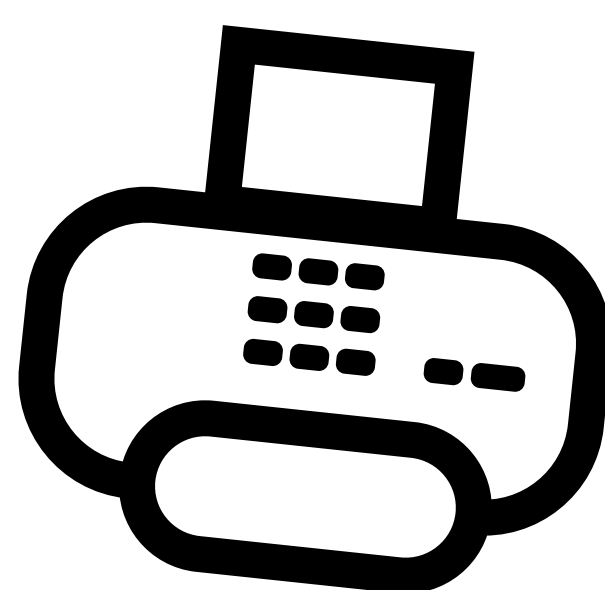
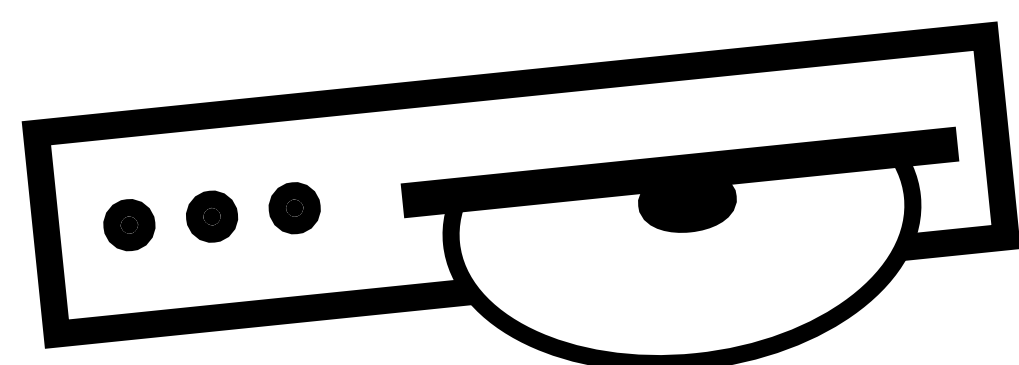
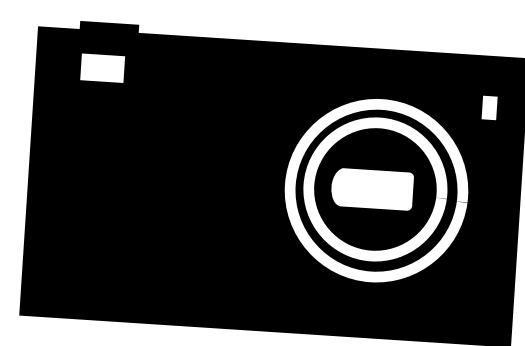
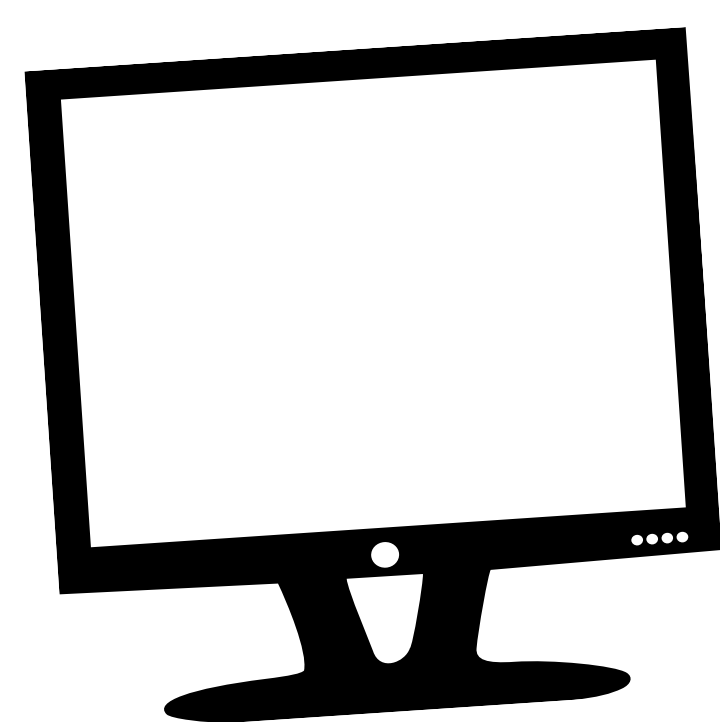
ACCEPTED DEVICES

- COMPUTERS, KEYBOARDS, MICE
- STEREO EQUIPMENT & SPEAKERS
- MOBILE & LANDLINE PHONES
- TVS & MONITORS
- UNINTERRUPTIBLE POWER SUPPLIES
- DVD/BLU-RAY/CD PLAYERS & VCRS
- PRINTERS & FAX MACHINES
- COMPUTER PERIPHERALS & CORDS
- DIGITAL CAMERAS
- HOUSEHOLD MODEMS & ROUTERS
- DIGITAL MUSIC PLAYERS (BATTERY POWERED)
- VIDEO GAME CONSOLES

ONLY the items listed above
are eligible for free drop off.

Collection service available for a fee. Call for pick-up.
Businesses, agencies & non-profits call for
appointment. Households don't need appointment.

Telephone: (808) 969-1222, Email: office@mrksrecyclehawaii.com
Website: www.mrksrecyclehawaii.com/electronic-devices.html



All electronics may contain toxic materials.
If thrown in the trash they will leach into the landfill and
may pollute ground water and the ocean.
Toxins from e-waste are dangerous to people and the 'āina.

If your electronics are working, it is best to donate for reuse instead of
recycle. This maximizes value and helps citizens of our island.
For where to donate and additional recycling options and locations go to
HawaiiZeroWaste.org/recycle/e-waste.

The State of Hawai'i law, "Electronics
Device Recycling and Recovery", requires
manufacturers of many electronic
devices to provide recycling services.
<https://health.hawaii.gov/ewaste/>

Don't see your particular
type of electronics listed?
Contact Mr. K's to
inquire if they will accept
for a fee.

Mālama (care for) our island and planet by keeping electronics out of the trash.